

PALESTINE

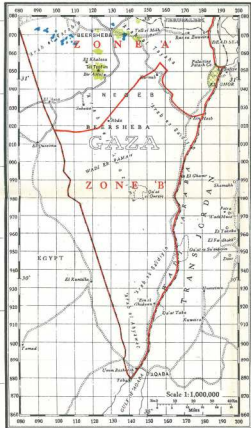
INDEX TO VILLAGES & SETTLEMENTS

Scale 1:250,000

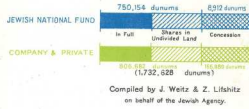
REFERENCE

- Zone
- Arab Village
- Arab Settlement
- Arab Road
- Railway

SOUTHERN PALESTINE

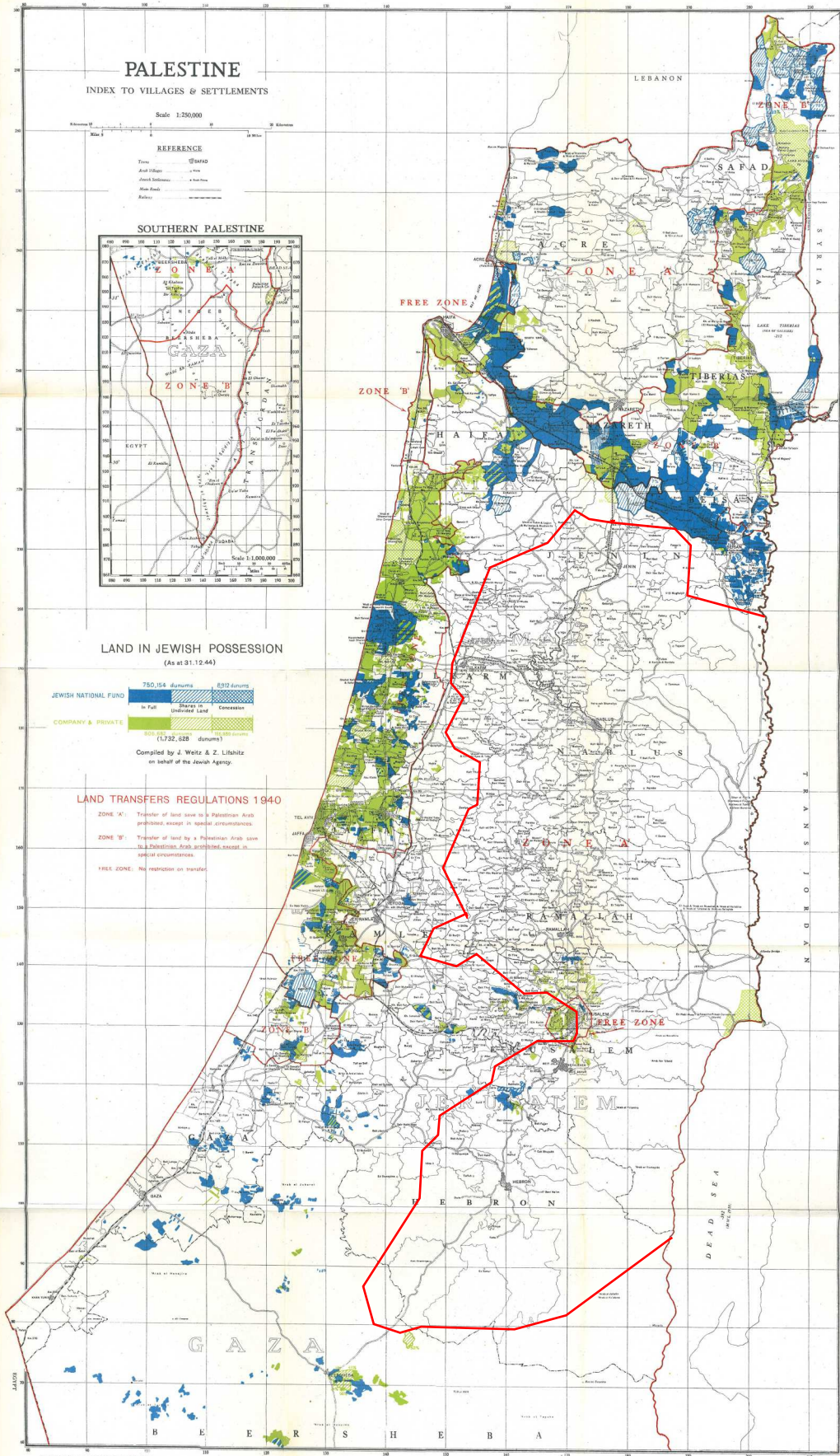


LAND IN JEWISH POSSESSION
(As at 31-12-44)



LAND TRANSFERS REGULATIONS 1940

- ZONE 'A': Transfer of land save to a Palestinian Arab prohibited, except in special circumstances.
- ZONE 'B': Transfer of land by a Palestinian Arab save to a Palestinian Arab prohibited, except in special circumstances.
- FREE ZONE: No restriction on transfer.



Copyright reserved under Palestine P.O. 18 of 1934

Printed by O.S. Shaw reproduction material supplied by Survey of Palestine, Ltd.

Jewish Land Holdings in Palestine in 1940